



# Mirrabooka

The WayTrans package is a complete system designed to accommodate all types of commodity



## Weighbridge Transaction System

### Overview:

The weighbridge transaction system (WayTrans) has been designed to record transactions that pass over a weighbridge. These loads can be bulk, liquid or packaged. A cash sales module is available for the sale of packaged products. This application provides an extensive range of documentation that may be required for all stages of the process from order to delivery, for despatch and purchasing, to receipt for supply.

### Features:

#### Despatching Operations

- ◆ Order entry
- ◆ Load validation on vehicle receipt
- ◆ Packing floor load scheduling
- ◆ Authorise load release
- ◆ Provides full despatch documentation on departure from weighbridge
- ◆ Email pickup schedule to carriers
- ◆ Full support for pallet control
- ◆ Export documentation produced

#### Receivals Documentation

- ◆ Manifest for incoming products when orders placed
- ◆ Order matching at weighbridge
- ◆ Full documentation produced on receipt
- ◆ Product analysis for quality evaluation

#### Cash Sales Module

- ◆ Point of sale for various products
- ◆ Supports quotas for customers
- ◆ Produces despatch documentation and invoicing

Despatch Schedule produced from orders

Quality level can be recorded automatically

Packaged goods can be sold on a per item basis

Mirrabooka Systems Pty Ltd  
Unit 8, 675 Gympie Road, LAWNTON QLD 4501, Brisbane, Australia  
Phone: 61 7 3857 7899 Email: sales@mirrabooka.com Web: www.mirrabooka.com

# WayTrans – Despatch

Carrier Contractors can be scheduled and notified by email

## Tare Weigh & Load Validation

On arrival at the weighbridge, the driver quotes his order number, which is validated before proceeding. The vehicle is tare weighed and a Load Authorisation Docket is produced.

## Packing Floor Load

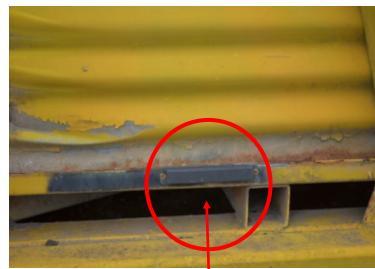
### Load Schedule

A dynamic display provides a list of vehicles expected for the next 48 hours. It is ordered by the ETA time and provides a single line summary for each order. When a vehicle has arrived at the W/B, registration details, tare weight and order number, are displayed.



### Amend/Acknowledge Load Details

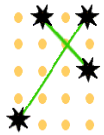
Before each load is released, the packing floor personnel checks the loading details, amends where required, and authorises the load for shipment.



RFID TAG

### The Sugar Factory

Lutwyche Qld 4030 Australia  
 Telephone: (07) 3857 7899 Fax: (07) 3857 1368  
 E-Mail: sugarmill@mirrabooka.com



### CERTIFICATE OF CONFORMANCE

This product has been inspected and tested during manufacture according to the requirements of the certified quality system and was in conformity with the agreed specification.

To: Allied Bakers of Brisbane  
Lot 7, No 304 Mill Drive  
Brisbane

Certificate Number: 3309005  
 Product Name: Casor Sugar  
 Product Code: 9925  
 Pack Size: 23kg  
 Delivery Note Number: 190246  
 Dispatch Date: 13.05.06-06-2003

Date/Batch Code(s): 06-06-2003/556712

## Weighbridge Departure

- ◆ Check load is completed
- ◆ Gross weight is taken
- ◆ Despatch documentation is completed, including Despatch Docket, Certificate of Conformance and Load Audit Check

Pallet documents and Conformance Certificates produced.

RFID Vehicle Identification available for known contractors

# WayTrans – Receivals

This system can be interfaced to an Automatic Weighbridge System

Can be interfaced to a range of devices, weighers, PLC, screen displays

## Bulk Transaction W/B Operation

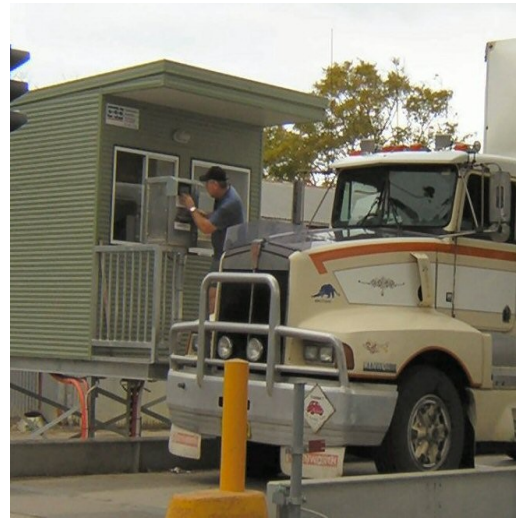
For the receivals transactions, two operations take place. The first weighbridge procedure is the gross weighing of the loaded vehicle when it arrives and the second is the tare weighing of the empty vehicle when it departs.

### Gross Weigh Procedure

When the vehicle arrives, the driver provides the delivery details of the load. This information may have already been entered using a Load Identification Utility, which provides a set of supplier details for an order. If this number is quoted, all of the delivery details will be available.

### Tare Weigh Procedure

Once the vehicle has been unloaded and arrives back at the weighbridge, it can be tare weighed.



A unique transaction number is generated for each receivals transaction. This reference number is useful for future enquiries.

## Cash Sales Module

Products other than bulk can be handled by this package. These usually include items that are pre-packaged such as bags or drums, etc.

PROOF OF DELIVERY COPY  
RETURN WITH INVOICE

THE SUGAR MILL  
DELIVERY NOTE

THE SUGAR MILL:  
Phone: (02) 3557-7869  
Fax: (02) 3857-1368

13.32.45

RECORD No.:	157269
BRANCH:	LLIT
ACCOUNT CODE:	100792
PO NUMBER:	PC22505
DATE:	16-01-2003
DELIVERY NOTE No.:	HS 60743
CARRIER:	SCOTT'S TRANSPORT
TRUCK No.:	VV33DM

IMAS Order Number: 282506

CHARGE: BILL GROVE DELIVER: BILL GROVE  
12-48 PEARGEE ST  
NTH WODDEN VIC

CODE	DESCRIPTION	No. OF BAGS	TONNES
3025	CASTER 25KG	480	12.00

CERTIFICATE OF CONFORMANCE REQUIRED  
CODES #3014/3015 EXCHANGE PALLETS

Gross 62.50 Tare 23.00

DRIVER	CUSTOMER
<input type="checkbox"/> LOADED IN GOOD ORDER & CONDITION	<input type="checkbox"/> RECEIVED IN GOOD ORDER & CONDITION
<input type="checkbox"/> DAMAGES/SHORTAGES: AS LISTED BELOW	<input type="checkbox"/> DAMAGES/SHORTAGES: AS LISTED BELOW
PRINT NAME: _____	PRINT NAME: _____
SIGNED: / /	SIGNED: / /

xWbUtil

Receivals Tare Weight Entry

Transaction No: 626292

Supplier:

Code: 50 Name: QUEENSLAND SUGAR LT  
Address: 192 ANN ST, BRISBANE

Product:

Code: 532 Desc: BAGASSE - R/POINT

Carrier:

Code: 1 Name: 1  
Truck No: 443

Gross Weight: 3756 Tare Weight: 1433

Tare Weigh [checked] Clear Screen [checked] Exit [x]

Queue	Truck	Carrier	Time
524129	3232	1	10.32
524130	43	1	14.57
626292	443	1	09.50